



Ingalls Park

Project Location: 735 SW 1st Street

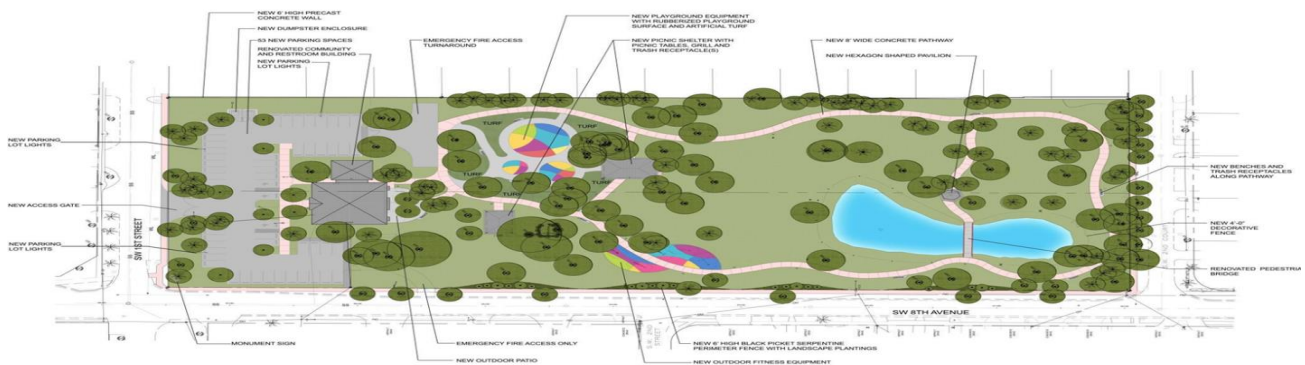


Project Description: The City is developing Ingalls Park located in the S.W. quadrant of the City of Hallandale Beach on the south-east corner of 1st Street and 8th Ave. Features to be included on this park are: New fence along 8th Avenue, 20 New Parking Spaces, New Decorative Fence around the pond, New Exercise Equipment Stations and Community Building and restrooms Improvements.

ENGINEER/ARCHITECT
Synalovsky Romanik Saye

GENERAL CONTRACTOR
TBD

- PROJECT PROGRESS: FEBRUARY 2017**
- Continuing Services Agreement awarded to Synalovsky Romanik and Saye, LLC on August 17, 2016
 - Conceptual Design development have began
 - Conceptual Design was presented to the Parks Board on December 13, 2016
 - Conceptual Design was presented to Commission December 21, 2016.
 - Design Option B was selected by the commission on December 21st, 2016.



<u>TENTATIVE WORK SCHEDULE</u>	
100% Design	March 2017
Contractor Award	TBD
Groundbreaking	TBD
Construction	TBD
Grand Opening	TBD

CITY OF HALLANDALE BEACH – OFFICE OF CAPITAL IMPROVEMENT
CONTACT INFORMATION:
Capital Projects Manager
Sarita Shamah
(954) 457-2995
sshamah@CoHB.org