



Ingalls Park

Project Location: 735 SW 1st Street

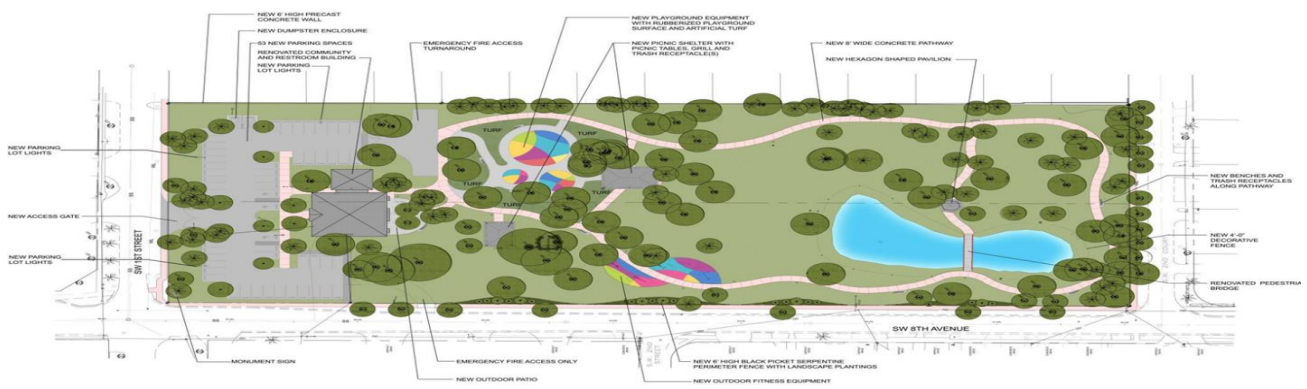


Project Description: The City is developing Ingalls Park located in the S.W. quadrant of the City of Hallandale Beach on the south-east corner of 1st Street and 8th Ave. Features to be included on this park are: New fence along 8th Avenue, 20 New Parking Spaces, New Decorative Fence around the pond, New Exercise Equipment Stations and Community Building and restrooms Improvements.

ENGINEER/ARCHITECT
Syalovsky Romanik Saye

GENERAL CONTRACTOR
TBD

- PROJECT PROGRESS: MAY 2017**
- Conceptual Design was presented to the Parks Board on December 13, 2016
 - Conceptual Design was presented to Commission December 21, 2016.
 - Design Development of 60% was presented to the City on February 2017.
 - 90% Construction Documents to be submitted for Permitting on April 2017
 - Estimated permit approval June 2017



<u>TENTATIVE WORK SCHEDULE</u>	
100% Design:	April 2017
Estimated Contractor Award:	August 2017
Estimate Groundbreaking:	September 2017
Estimate Construction:	10 months

CITY OF HALLANDALE BEACH – OFFICE OF CAPITAL IMPROVEMENT

CONTACT INFORMATION:

Capital Projects Manager

Sarita Shamah

(954) 457-2995

