



# Ingalls Park

Project Location: 735 SW 1<sup>st</sup> Street

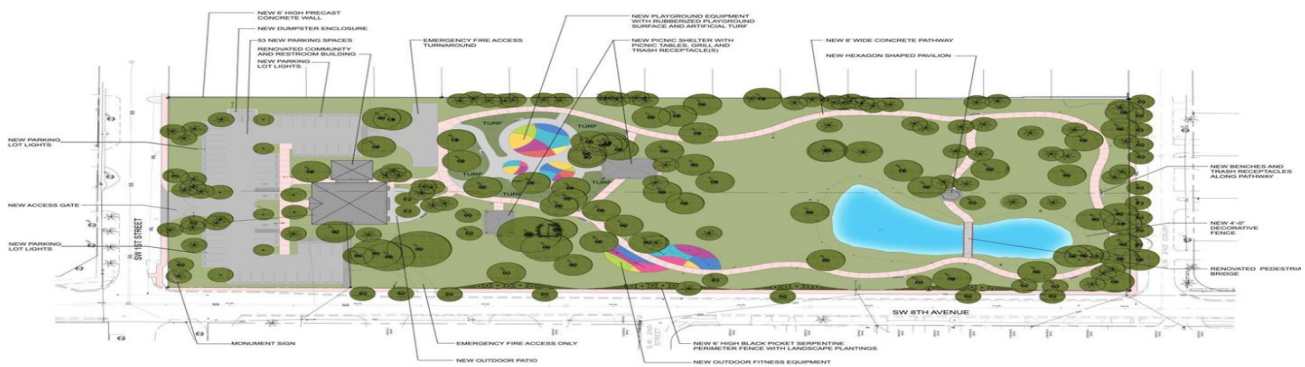


**Project Description:** The City is developing Ingalls Park located in the S.W. quadrant of the City of Hallandale Beach on the south-east corner of 1<sup>st</sup> Street and 8<sup>th</sup> Ave. Features to be included on this park are: New fence along 8<sup>th</sup> Avenue, 20 New Parking Spaces, New Decorative Fence around the pond, New Exercise Equipment Stations and Community Building and restrooms Improvements.

**ENGINEER/ARCHITECT**  
Synalovsky Romanik Saye

**GENERAL CONTRACTOR**  
TBD

- PROJECT PROGRESS: AUGUST 2017**
- Continuing Services Agreement awarded to Synalovsky Romanik and Saye, LLC on August 17, 2016
  - Conceptual Design development have began
  - Conceptual Design was presented to the Parks Board on December 13, 2016
  - Conceptual Design was presented to Commission December 21, 2016.
  - Plans are being value engineered at this time



<b><u>TENTATIVE WORK SCHEDULE</u></b>	
100% Design	March 2017
Contractor Award	TBD
Groundbreaking	TBD
Construction	TBD
Grand Opening	TBD

CITY OF HALLANDALE BEACH – OFFICE OF CAPITAL IMPROVEMENT  
 CONTACT INFORMATION:  
**Capital Projects Manager**  
**Matthew Cohen**  
**(954) 457-2995**  
[sshamah@CoHB.org](mailto:sshamah@CoHB.org)