

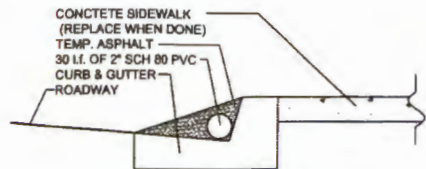


HBB & I-95 Landscaping Improvements Project
Bid #FY2014-2015-009

PLAN LIST:

South Swale:

- Sheet LA-1 – Existing Tree Disposition Plan (South Side)
- Sheet LA-2 – Existing Tree Disposition List
- Sheet LA-3 – Planting Plan (South Side)
- Sheet LA-4 – Plant List & Planting Details



TEMPORARY CONSTRUCTION SITE
ENTRANCE SECTION
N.T.S.



REFERENCE PLAN
SCALE: N.T.S.

MOT NOTE:
Install Temporary signing
as per FDOT design
standards 600 & 602

EXIT 18 OFFRAMP
(TO W. HALLANDALE BEACH BLVD)

PROVIDE TEMP. SIGN
"TRUCKS ENTERING HIGHWAY"

CONSTRUCT TEMPORARY
CONSTRUCTION SITE ENTRANCE
(REPLACE SIDEWALK AFTER
WORK IS DONE)

W. HALLANDALE BEACH BLVD

EXIST. FICUS &
SCHEFFLERA TO
BE REMOVED

EXIST. WHITE BIRDS
OF PARADISE TO BE
REMOVED

TRANSPLANT
EXIST PALMS AS
SHOWN

PARCEL "A"
SIMEONE AT 95
P.B. 132, PG. 13, B.C.R.

TRAC
HALLANDA
P.B. 170, f

EXIST. FICUS
HEDGE TO BE
REMOVED

EXIST. IXORA HEDGE TO
REMAIN

EXIST. BLACK
OLIVE OFF-SITE



Handwritten signature and date: 08/17/13

ROSENBERG GARDNER DESIGN

LANDSCAPE ARCHITECTURE / LAND PLANNING
17870 NW 75th Ave., Suite 214, Miami, Florida, 33155
Phone: 305.272.1515 Fax: 305.202.9176 www.ROSENBERGGARDNER.com

DRAWN:
DESIGNED:
CHECKED:

Existing Tree Disposition Plan
(South Side)

HALLANDALE I-95 POND RECONFIGURATION

Hallandale Beach, Florida

Revised: 08.17.13
02/20/13 REVIEW COMMENTS
2/18/2014 REVIEW COMMENTS

DATE: 08.17.13
SCALE: 1"=20'-0"
SHEET: LA-1

EXISTING TREE DISPOSITION LIST								
KEY	BOTANICAL NAME	COMMON NAME	SIZE			DISPOSITION		
			HT.(ft.)	SPD.(ft.)	DBH.(in.)	REMAIN	REMOVE	TRANSPL.
1	Phoenix dactylifera "Medjool"	Medjool Date Palm	30	15	18			X
2	Phoenix dactylifera "Medjool"	Medjool Date Palm	30	15	18	X		
3	Taxodium distichum	Bald Cypress	12	6	3		X	
4	Taxodium distichum	Bald Cypress	16	6	4		X	
5	Conocarpus erectus "Sericeus"	Silver Buttonw ood	16	16	multi	X		
6	Conocarpus erectus "Sericeus"	Silver Buttonw ood	16	16	multi	X		
7	Cordia sebestena	Orange Geiger	20	15	6	X		
8	Cordia sebestena	Orange Geiger	20	6	multi	X		
9	Roystonea regia	Royal Palm	40	16	18	X		
10	Roystonea regia	Royal Palm	30	16	18	X		
11	Roystonea regia	Royal Palm	40	16	18	X		
12	Roystonea regia	Royal Palm	40	16	18			X

NOTE:
TREE PROTECTION IS TO BE IN ACCORDANCE WITH FDOT INDEX 544.

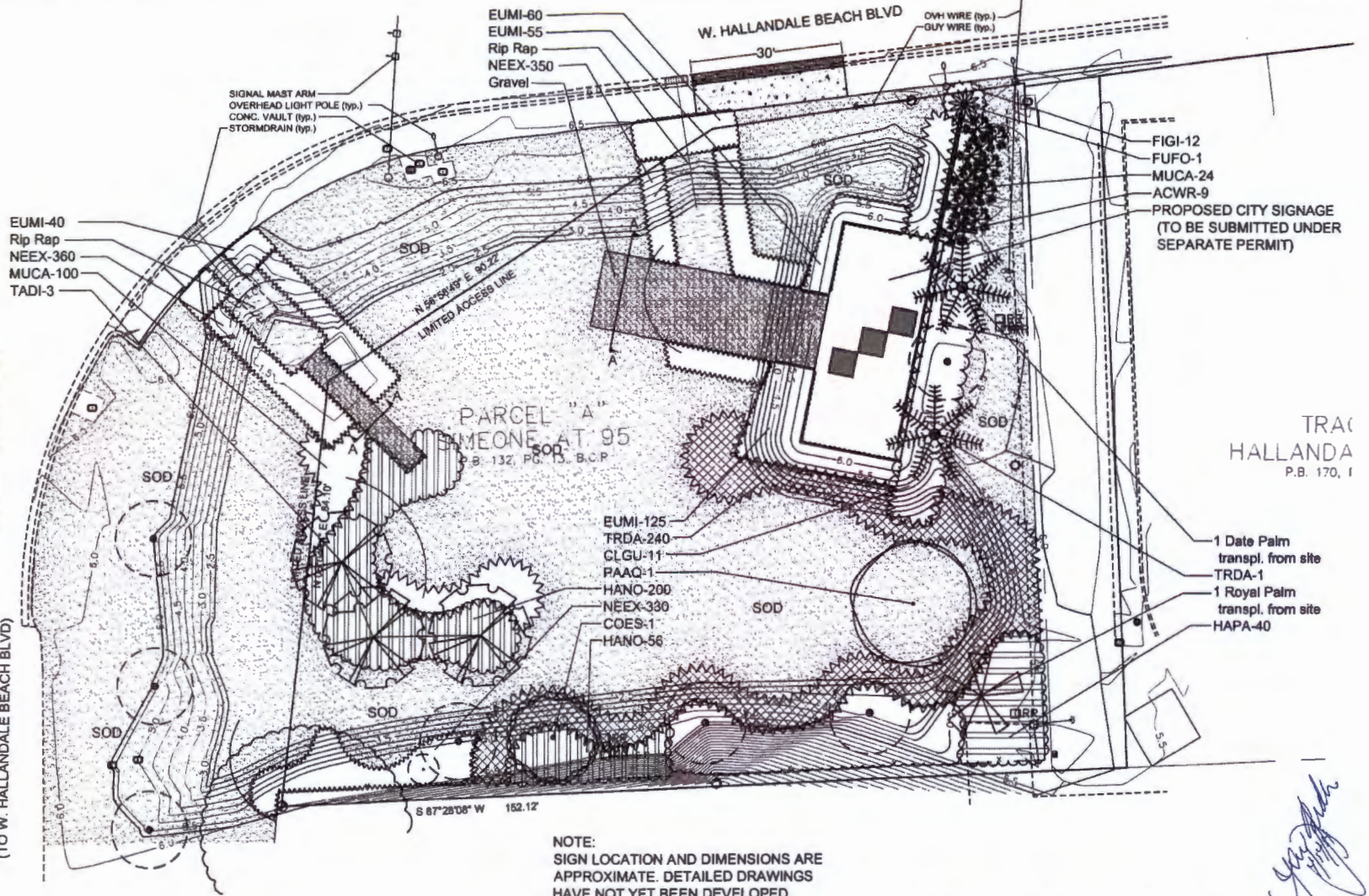
[Handwritten Signature]
1/15/13



REFERENCE PLAN
SCALE NTS



EXIT 18 OFFRAMP
(TO W. HALLANDALE BEACH BLVD)



NOTE:
SIGN LOCATION AND DIMENSIONS ARE APPROXIMATE. DETAILED DRAWINGS HAVE NOT YET BEEN DEVELOPED.



[Handwritten signature]

ROSENBERG GARDNER DESIGN
LANDSCAPE ARCHITECTURE / LAND PLANNING
11025 HWY 780 AVE., SUITE 214, HALLANDALE, FLORIDA 33013
PHONE: 954-941-8811 FAX: 954-941-8812 EMAIL: INFO@ROSENBERGGARDNER.COM
WWW.ROSENBERGGARDNER.COM

DRAWN:
DESIGNED:
CHECKED:

Planting Plan
(South Side)

HALLANDALE I-95 POND RECONFIGURATION

Hallandale Beach, Florida

SI Planning	PLA-102
SI Landscaping	SI LA-100
DATE	09.17.13
10/26/2013 REVIEW COMMENTS	SCALE 1"=20'-0"
3/18/2014 REVIEW COMMENTS	SHEET LA-3

PLANT LIST					
KEY	PLANT NAME	QTY.	UT.	SIZE	Maintenance Height
ACWR	Acceclorhaphie wrightii ..Paurotis Palm	9	ea.	8'-10' tall overall, multi-stem	n/a
CLGU	Clusia guttifera ...Small Leaf Clusia	11	ea.	8' tall, 5' o.c.	12'-14' Height
COES	Conocarpus erectus 'Sericeus' ..Silver Buttonwood	1	ea.	14' tall x 6' spread, 3 trunks	n/a
EUMI	Euphorbia millii ...Crown of Thorns	280	ea.	3 gallon cans, 18" o.c.	24" height
FIGI	Ficus microcarpa 'Green Island' ...Green Island Ficus	12	ea.	3 gallon cans, 24" o.c.	24" height
FUFO	Furcraea foetida ...False Agave	1	ea.	30"x30"	n/a
HANO	Hamelia nodosa ..Dwarf firebush	256	ea.	3 gallon cans, 24" o.c.	42" height
HAPA	Hamelia patens ..Firebush	40	ea.	3 gallon cans, 36" o.c.	8' height
MUCA	Muhlenberghia capillaris ..Muhly Grass	124	ea.	3 gallon cans, full, 24" o.c.	allow full growth
NEEX	Nephrolepis exaltata ...Boston Fern	1040	ea.	1 gallon cans, full, 12" o.c.	allow full growth
PAAQ	Pachira aquatica ...Water Chestnut	1	ea.	14' tall x 6' spread, 3" cal.	n/a
PHDA	Phoenix dactylifera "Medjool" ..Medjool Date Palm	1	ea.	30' tall OA, classic cut, match adjacent existing palm height	n/a
TADI	Taxodium distichum ..Bald Cypress	3	ea.	14' tall x 6' spread, 3" cal.	n/a
TRDA	Tripsacum dactyloides ..Fakahatchee Grass	240	ea.	3 gallon cans, full, 30" o.c.	allow full growth
sod	Bahia Sod	14850	s.f.	solid sod	
gravel	Gravel	8	c.y.	3" depth, on filter fabric 1/4" 1/2" aggregate size, white or light tan color, submit sample for approval	
Rip Rap	Boulders			12"-30" oolite	
	Planting Soil	as req.	c.y.		
	80% Silica Sand				
	20% Everglades Muck				
	Shredded Maleuca Mulch	as req.	c.y.		

TO BE USED: "Covering Standards and Specifications: 2013 Florida Department of Transportation, Design Standards, and 2013 Standard Specifications for Road and Bridge Construction, Section 550 Landscape Installation, and any applicable updates."

SUMMARY OF QUANTITIES			
FDOT PAY ITEM #	ITEM DESCRIPTION	QTY.	UT.
101-1	Mobilization	1	LS
120-1	Regular Excavation	515	c.y.
522-1	Conc. Sidewalk and Driveway	20	s.y.
110-1-1	Clearing and Grubbing	1	LS
580-1-1	Landscape - Small Plants	1	LS
1050-11-322	Utility Pipe, F & I, PE, Water/Sewer 2"-4.9"	34	I.F.

580-1-1 INCLUDES THE COST OF FURNISHING, INSTALLATION, AND REMOVAL OF ALL TEMPORARY SIGNS FOR MAINTENANCE OF TRAFFIC AS REQUIRED BY FDOT STANDARD DRAWING INDEXES 800 & 802, AND PALM RELOCATION. 1050-11-322 INCLUDES THE COST OF FURNISHING, INSTALLATION, AND REMOVING OF THE TEMPORARY MISCELLANEOUS ASPHALT PAVEMENT FOR THE TEMPORARY RAMP.

PLANTING NOTES:

-ALL PLANTING IS TO BE INSTALLED ACCORDING TO FDOT INDEX 544 PLANTING DETAILS.
-REFER TO FDOT STANDARD SPECIFICATIONS 580 FOR LANDSCAPE INSTALLATION.

WATERING SCHEDULE

A. The Contractor is responsible to provide the water for all new plants and transplants and means of distribution (i.e. hand watering or water truck) during the maintenance period and extending into the period after acceptance until the full schedule as listed below is complete. Water for trees and other large field grown plants shall be supplemented by hand or water truck, in addition to the irrigation system, (if one is provided). Contractor can adjust watering schedule during heavy rain season upon approval of the Landscape Architect.

AMOUNT OF WATER PER APPLICATION

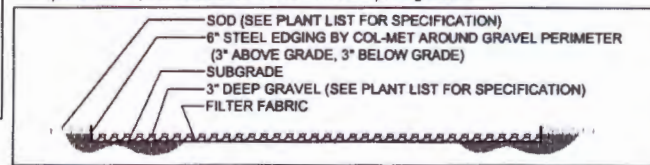
For trees up to 5 inch caliper - 5 gallons
From 5 to 8 inch caliper - 25 gallons
9 inch and up caliper - 50 gallons

FREQUENCY OF WATER

Daily for the first week
3 times per week for weeks 2 - 5
2 times per week for weeks 6 - 8
1 time per week for weeks 9 - 12

B. Water in plants by thoroughly soaking of the entire root ball immediately after planting. For large trees and shrubs, add water while backfilling hole to eliminate any air pockets in the soil around the root ball.

C. Water shrubs, sod and groundcover a minimum of once daily for a week or until an irrigation system is fully operational. If no irrigation system is to be installed, the Contractor shall be responsible for watering the shrub, sod, and groundcover for the time specified above, after installation of each section of the planting installed.



SECTION A - GRAVEL GRAVEL BED

SCALE: 1/4"=1'-0"

Handwritten signature
08/17/13