

CURRIE SOWARDS AGUILA architects

Architecture, Planning, Interiors, & Sustainable Design

AA26001584
185 NE 4TH AVENUE, SUITE 101
DELRAY BEACH, FL 33483

T: (561) 276-4951 F: (561) 243-8184
E-MAIL: office@csa-architects.com

ISSUED FOR : 10-13-2014

BIDS

PERMIT 04-09-2015

CONSTRUCTION

SEAL

PROJECT TITLE CITY OF HALLANDALE BEACH FIRE RESCUE STATION 7

111 FOSTER ROAD
HALLANDALE BEACH, FL
33009

REVISIONS		
NUM.	DESCRIPTION	DATE
1	BUILDING DEPT. COMMENTS	05/15/15
3	BLDG DEPT. COMM./COORDINATION	07/10/15

THIS PROJECT HAS BOOK SPECIFICATIONS THAT ARE AN INTEGRAL AND COMPLEMENTARY PART OF THE OF THE CONSTRUCTION DOCUMENTS.

THESE DRAWINGS ARE PREPARED PER ESTABLISHED INDUSTRY STANDARDS AND REPRESENT THE ARCHITECT AND ENGINEERS DESIGN CONCEPT. THEY ARE NOT INTENDED TO PROVIDE EVERY DETAIL OR CONDITION REQUIRED TO CONSTRUCT THE BUILDING. THE CONTRACTOR THROUGH SUBMITTALS AND OTHER COORDINATION EFFORTS IS FULLY RESPONSIBLE FOR PROVIDING A COMPLETE AND OPERATIONAL BUILDING WHETHER INDICATED ON THE PLANS OR NOT.

FILE NUMBER:
C:\Users\jvon\Documents\REVIT LOCAL FILES\140403-CENTRAL-HW&K.rvt

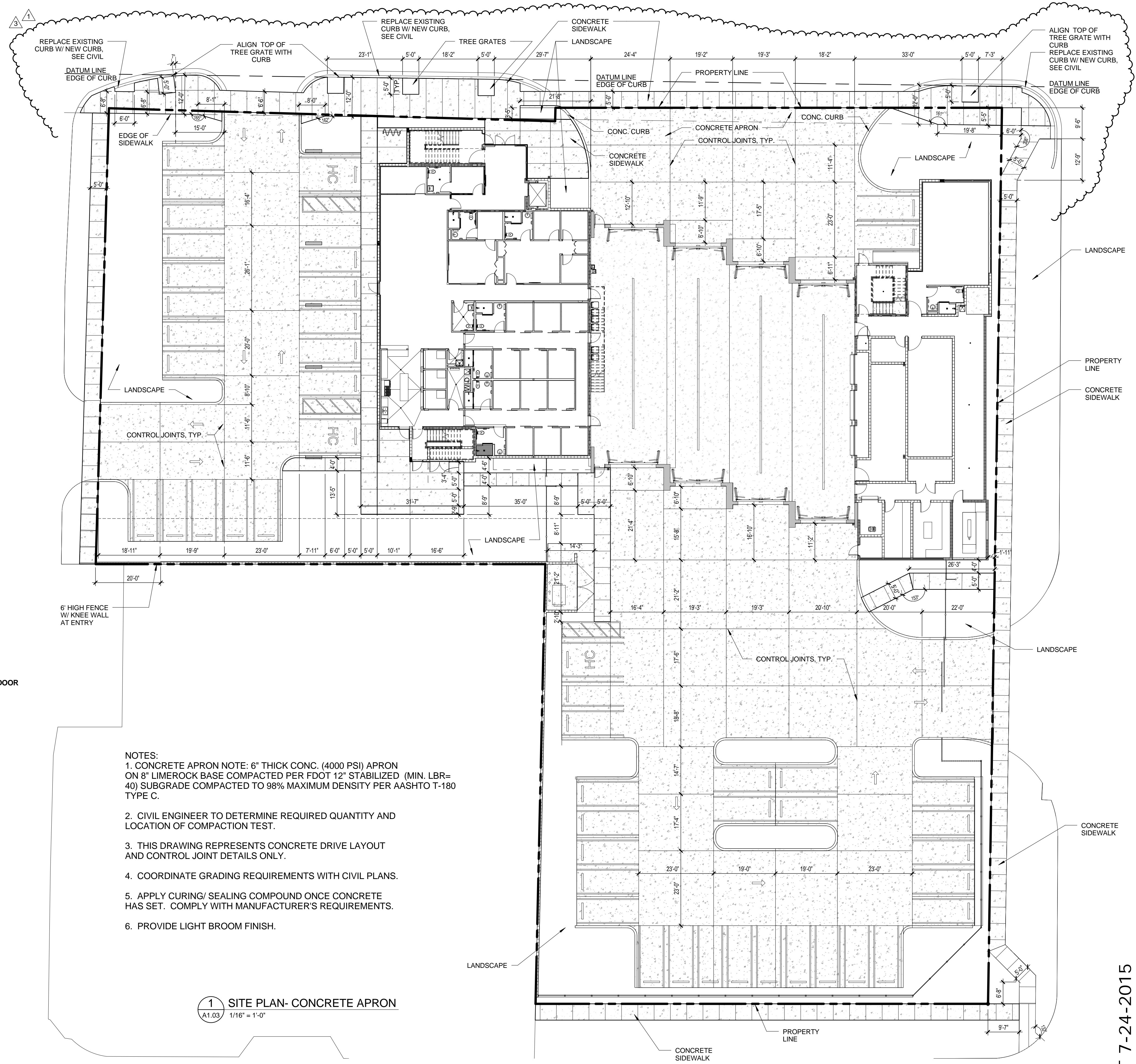
DRAWING TITLE SITE PLAN- CONCRETE APRON AND SIDEWALK

DATE 1/02/2015 | DRAWN BY Author

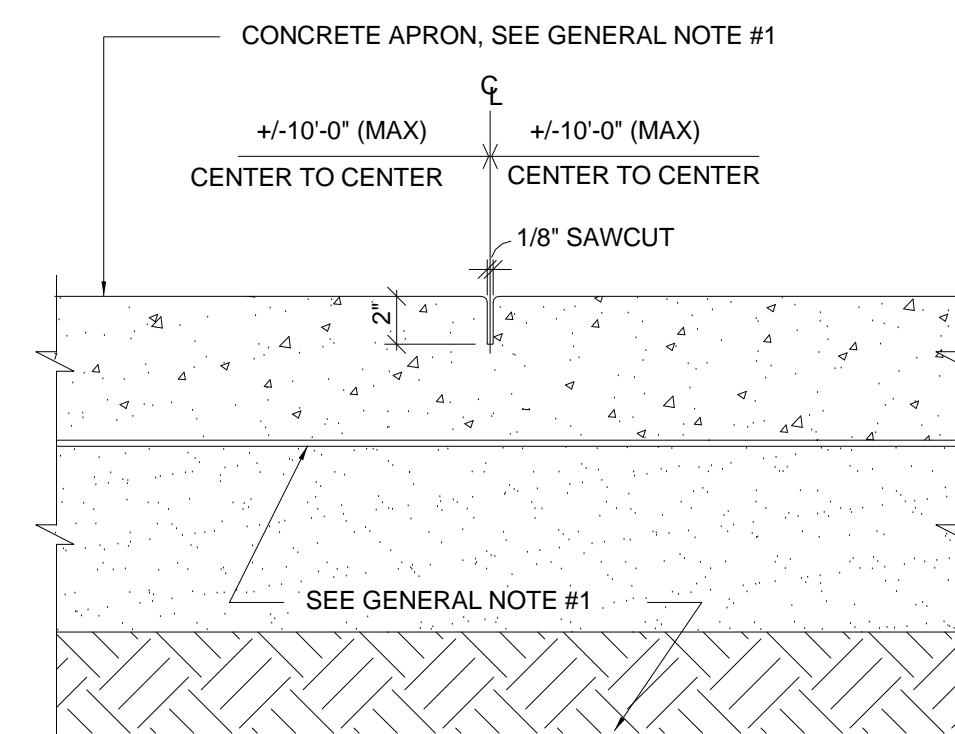
JOB NUMBER 140403

DRAWING NUMBER

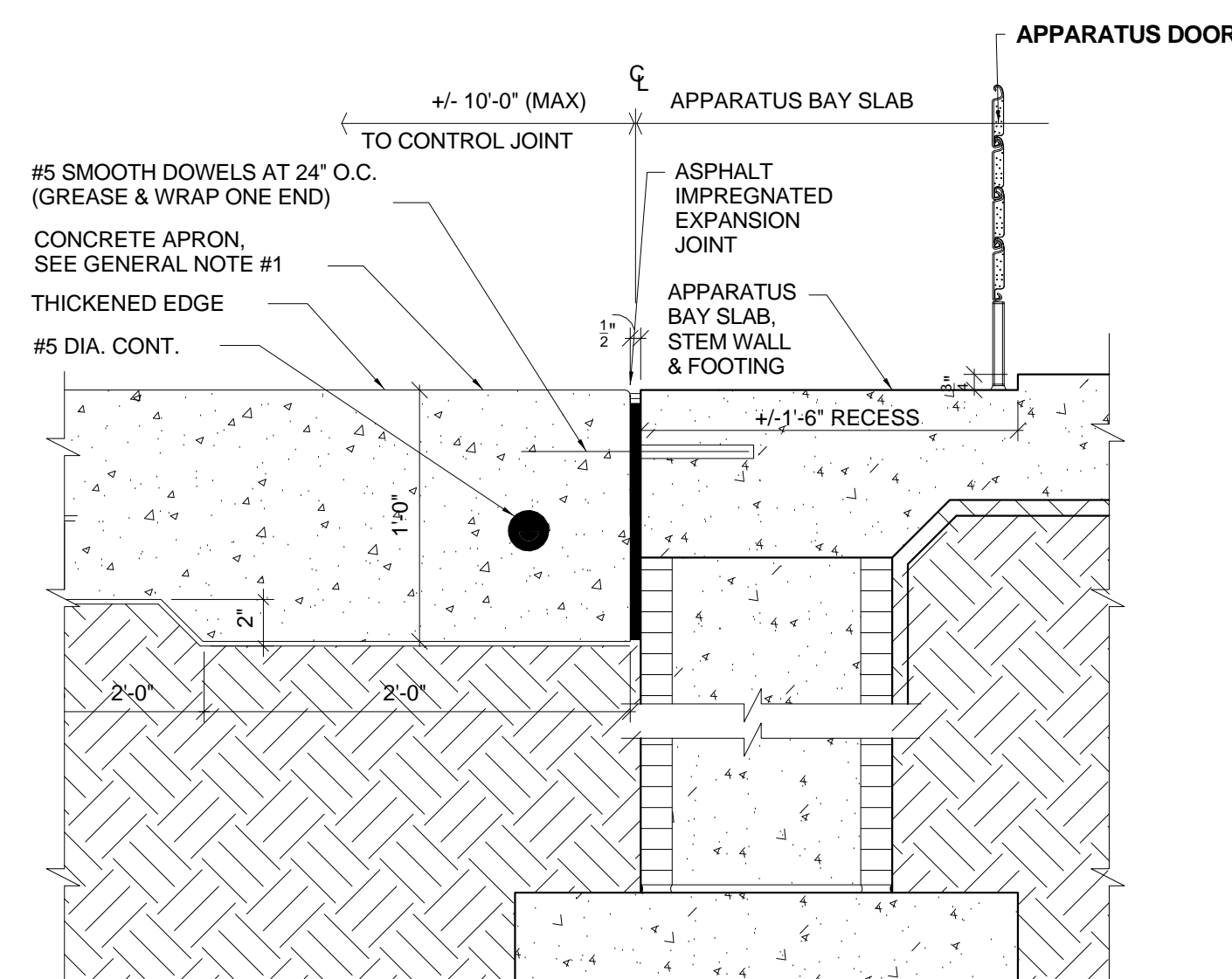
A1.03



NOTE: MAX. CONTROL JOINT GRID SIZE +/-10' X +/-10'



2 CONTROL JOINT
A1.03 1 1/2" = 1'-0"



3 CONCRETE APRON @ BAY
A1.03 1 1/2" = 1'-0"

- NOTES:
1. CONCRETE APRON NOTE: 6" THICK CONC. (4000 PSI) APRON ON 8" LIMEROCK BASE COMPACTED PER FDOT 12" STABILIZED (MIN. LBR=40) SUBGRADE COMPACTED TO 98% MAXIMUM DENSITY PER AASHTO T-180 TYPE C.
 2. CIVIL ENGINEER TO DETERMINE REQUIRED QUANTITY AND LOCATION OF COMPACTION TEST.
 3. THIS DRAWING REPRESENTS CONCRETE DRIVE LAYOUT AND CONTROL JOINT DETAILS ONLY.
 4. COORDINATE GRADING REQUIREMENTS WITH CIVIL PLANS.
 5. APPLY CURING/ SEALING COMPOUND ONCE CONCRETE HAS SET. COMPLY WITH MANUFACTURER'S REQUIREMENTS.
 6. PROVIDE LIGHT BROOM FINISH.

1 SITE PLAN- CONCRETE APRON
A1.03 1/16" = 1'-0"

THIS DOCUMENT IS THE PROPERTY OF CURRIE SOWARDS AGUILA ARCHITECTS INC. ALL RIGHTS ARE RESERVED. ANY POSSESSION, REPRODUCTION OR OTHER USE OF THIS DOCUMENT, WITHOUT THE WRITTEN CONSENT OF CURRIE SOWARDS AGUILA ARCHITECTS INC., IS PROHIBITED.
7/27/2015 1:39:22 PM

BID SET 7-24-2015