

**CURRIE  
SOWARDS  
AGUILA**  
architects

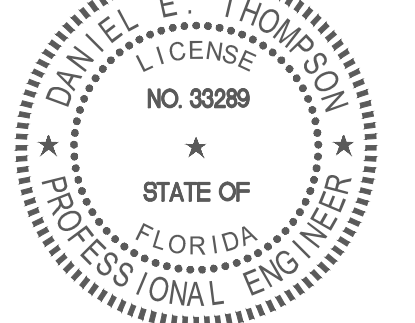
Architecture, Planning,  
Interiors, &  
Sustainable Design  
AA26001584  
185 NE 4TH AVENUE, SUITE 101  
DELRAY BEACH, FL 33483  
T: (561) 276-4951 F: (561) 243-8184  
E-MAIL: office@csa-architects.com

ISSUED FOR :  
DRC 10-13-14

BIDS  
PERMIT 04-09-2015

CONSTRUCTION

SEAL



PROJECT TITLE  
**CITY OF  
HALLANDALE  
BEACH FIRE  
RESCUE STATION  
7**

111 FOSTER ROAD  
HALLANDALE BEACH, FL  
33009

NUM.	DESCRIPTION	DATE
1	BUILDING DEPT. COMMENTS	05/15/15
3	BLDG DEPT. COMM./COORDINATION	07/10/15
5	ADDENDUM	09/14/15

THIS PROJECT HAS BOOK SPECIFICATIONS THAT ARE AN INTEGRAL AND COMPLIMENTARY PART OF THE OF THE CONSTRUCTION DOCUMENTS.

THESE DRAWINGS ARE PREPARED PER ESTABLISHED INDUSTRY STANDARDS AND REPRESENT THE ARCHITECT AND ENGINEERS DESIGN CONCEPT. THEY ARE NOT INTENDED TO PROVIDE EVERY DETAIL OR CONDITION REQUIRED TO CONSTRUCT THE BUILDING. THE CONTRACTOR THROUGH SUBMITTALS AND OTHER COORDINATION EFFORTS IS FULLY RESPONSIBLE FOR PROVIDING A COMPLETE AND OPERATIONAL BUILDING WHETHER INDICATED ON THE PLANS OR NOT.

FILE NUMBER

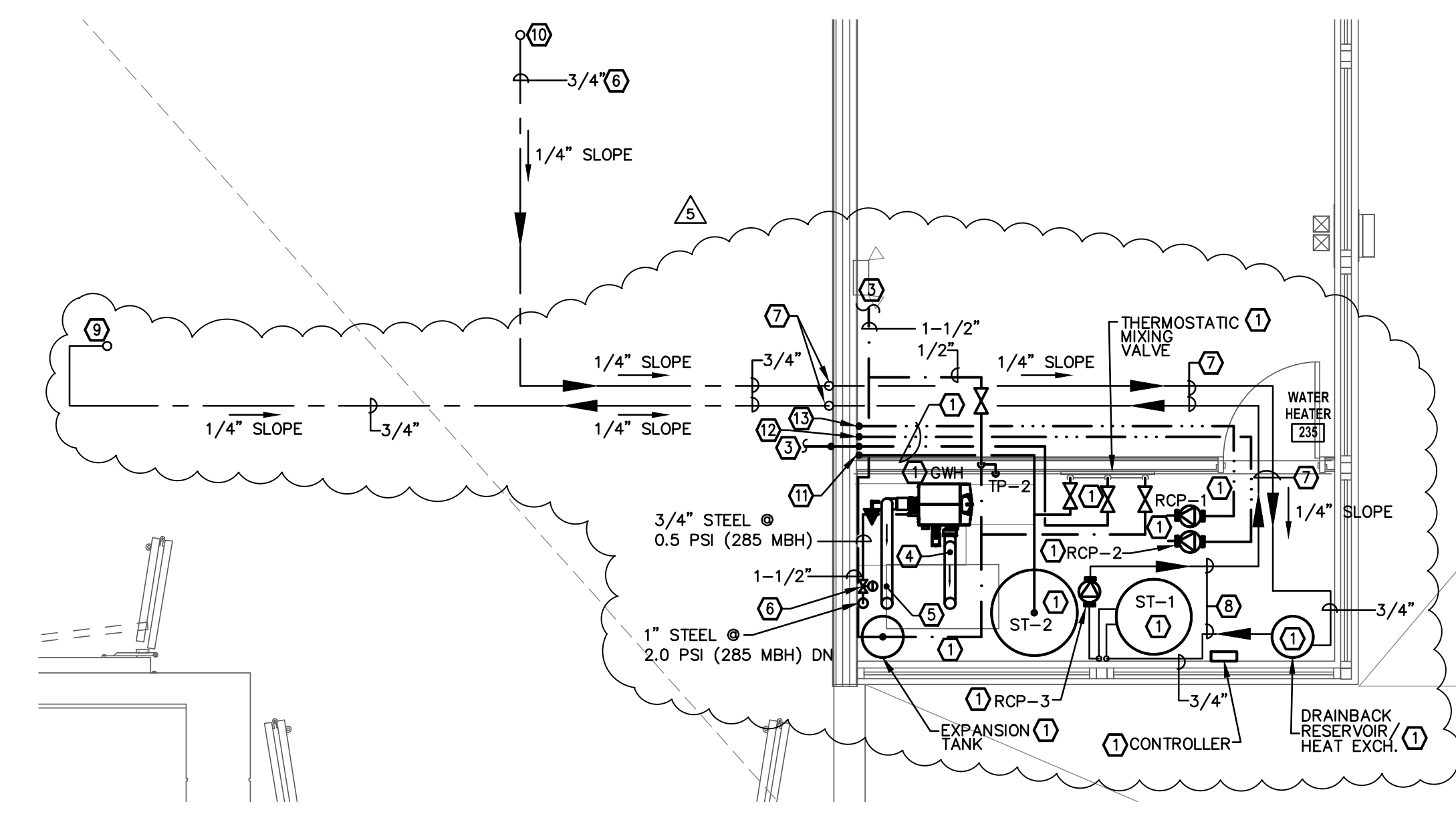
DRAWING TITLE  
**PLUMBING  
2ND FLOOR  
ENLARGED  
PLANS**

DATE 01/14/2015 DRAWN BY MB,DJM,AD

JOB NUMBER 140403/14069

DRAWING NUMBER

**P-2.2**

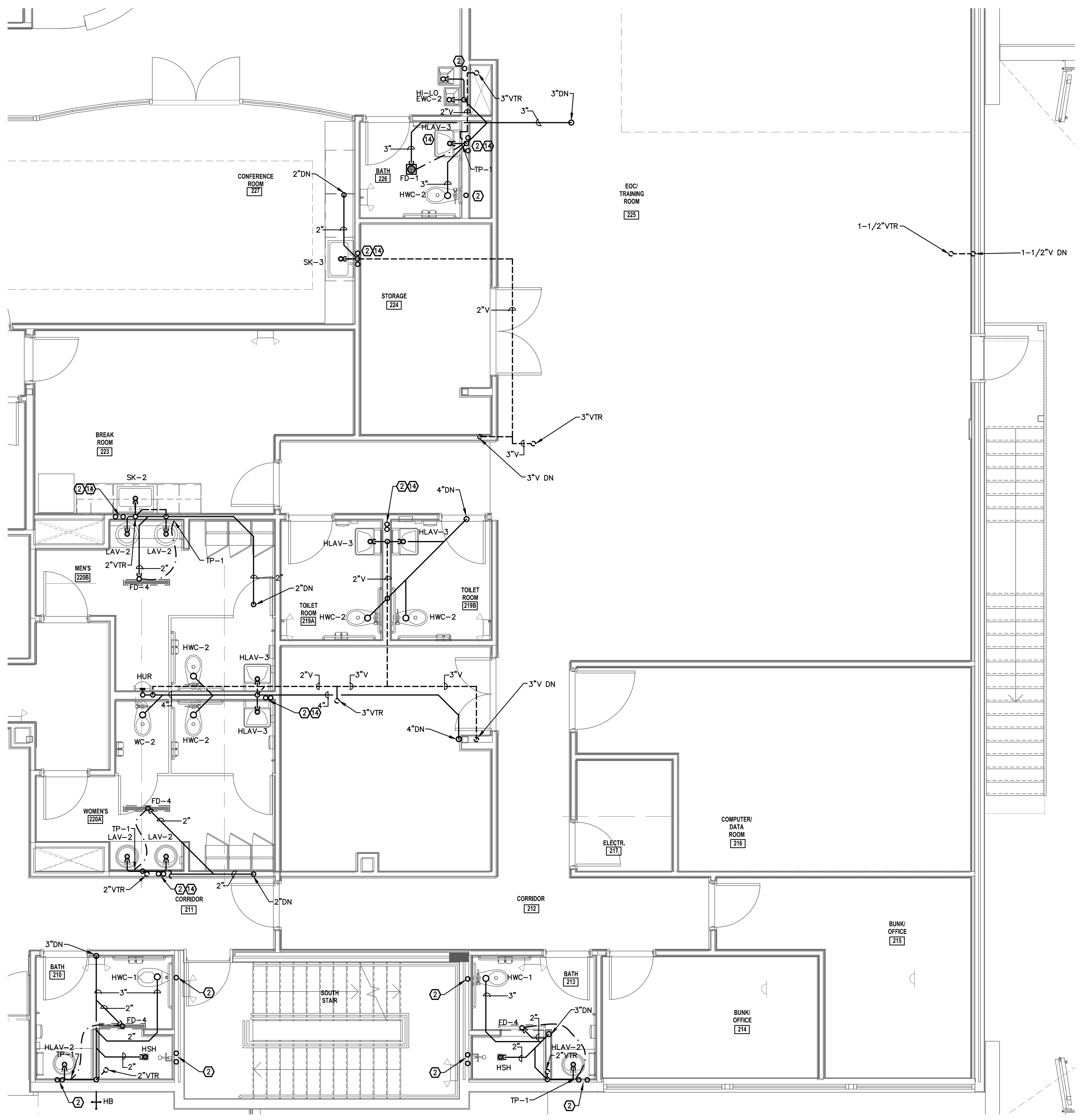


MEZZ. FLOOR ENLARGED PLUMBING PLAN  
1/4" = 1'-0"

GENERAL NOTES	
A.	CONTRACTOR IS RESPONSIBLE FOR PROVIDING AND INSTALLING ALL REQUIRED ACCESS PANELS FOR SHUT OFF VALVES, JUNCTION BOXES, VOLUME DAMPERS, ETC., WHETHER OR NOT THEY ARE SHOWN ON THE DRAWINGS.
C.	GAS LOADS SHOWN ON PLANS ARE ESTIMATES. CONTRACTOR SHALL VERIFY ACTUAL LOAD AND NOTIFY ARCHITECT AND ENGINEER IF ACTUAL LOAD IS HIGHER THAN ESTIMATED LOAD.
D.	CONTRACTOR SHALL FIELD VERIFY EXACT GAS PIPING ARRANGEMENTS AND CONNECTION SIZES AND LOCATIONS WITH OTHER TRADES AND EQUIPMENT MANUFACTURER PRIOR TO INSTALLATION.
E.	MAINTAIN 1/4" PER FOOT SLOPE TOWARDS DIRECTION OF DRAINBACK RESERVOIR FOR HORIZONTAL PIPING OF STORAGE AND SOLAR COLLECTOR LOOPS. INSTALLATION SHALL BE IN STRICT CONFORMANCE WITH MANUFACTURER'S REQUIREMENTS.
F.	ROUTE PLUMBING LINES IN APPARATUS BAY AT TIGHT AS POSSIBLE TO UNDERSIDE OF ROOF DECK THRU TRUSSES. COORDINATE EXACT ROUTING WITH OTHER TRADES PRIOR TO INSTALLATION.

PLAN KEY NOTES	
①	REFER TO SHEET P-0.3 FOR FURTHER DETAILS.
②	DOMESTIC WATER LINE(S) FROM 1ST FLOOR CEILING SERVING 2ND FLOOR FIXTURES.
③	1-1/2" DOMESTIC HOT WATER (120 F) FOR BUILDING PLUMBING FIXTURES. REFER TO SHEET P-1.2 FOR CONTINUATION.
④	4" PVC INTAKE UP TO GOOSENECK ABOVE ROOF TOP. PROVIDE BIRD SCREEN AT GOOSENECK ABOVE. INSTALLATION SHALL BE IN STRICT CONFORMANCE WITH MANUFACTURER'S REQUIREMENTS. SEE SHEET P-0.3 FOR FURTHER DETAILS.
⑤	4" PVC EXHAUST VENT UP TO ROOF CAP ABOVE ROOF TOP. INSTALLATION SHALL BE IN STRICT CONFORMANCE WITH MANUFACTURER'S REQUIREMENTS. SEE SHEET P-0.3 FOR FURTHER DETAILS.
⑥	0.5 PSI LOW PRESSURE REGULATOR, WHERE REQUIRED, PROVIDE FULL SIZED VENT TO EXTERIOR AS PER MANUFACTURER'S REQUIREMENTS.
⑦	SOLAR COLLECTOR LOOP LINES TO/FROM WATER HEATER ROOM @ MEZZANINE LEVEL.
⑧	SOLAR COLLECTOR LOOP. REFER TO SHEET P-0.3 FOR FURTHER DETAILS.
⑨	3/4" UP TO SOLAR COLLECTORS.
⑩	3/4" FROM SOLAR COLLECTORS.
⑪	1" HOT WATER (140 F) DOWN TO EXTRACTOR. REFER TO SHEET P-1.1 FOR CONTINUATION.
⑫	1" HOT WATER RETURN FROM EXTRACTOR. REFER TO SHEET P-1.1 FOR CONTINUATION.
⑬	1" HOT WATER RETURN FROM FROM BUILDING PLUMBING FIXTURES. REFER TO SHEET P-1.1 FOR CONTINUATION.
⑭	PROVIDE A THERMOSTATIC MIXING VALVE FOR LAVATORIES AND SINK(S). USE LEONARD VALVE ECO-MIX MODEL # 370-LF. REFER TO DETAIL ON SHEET P-4.1 AND DOMESTIC ISOMETRIC DIAGRAM ON SHEET P-X.X.

**TYEC**  
HVAC  
PLUMBING  
ELECTRICAL  
THOMPSON & YOUNGROSS  
ENGINEERING CONSULTANTS, LLC  
CERTIFICATE of AUTHORIZATION  
NO. 25996  
112 SOUTHEAST 10th STREET  
DELRAY BEACH, FL 33483  
www.tyecfla.com  
TEL: 561-274-0200  
FAX: 561-274-0222  
E-MAIL: tyc@tyecfla.com



2ND FLOOR ENLARGED PLUMBING PLAN  
1/4" = 1'-0"

THIS DOCUMENT IS THE PROPERTY OF CURRIE SOWARDS AGUILA ARCHITECTS INC. ALL RIGHTS ARE RESERVED. ANY POSSESSION, REPRODUCTION OR OTHER USE OF THIS DOCUMENT, WITHOUT THE WRITTEN CONSENT OF CURRIE SOWARDS AGUILA ARCHITECTS INC., IS PROHIBITED.

BID SET 7-24-2015